



Flight Plan & Site Survey

Created using **RPAS Wilco®**

Operation Name:

Mission 01-21-2023

Pilot Name:

[REDACTED]

Pilot Certificate:

[REDACTED]

Flight Start:

January 21, 2023 5:33 PM

Flight End:

January 21, 2023 7:33 PM

Flight Area (Latitude):

49° 5' 19.60" N (49.089)

Flight Area (Longitude):

122° 47' 11.20" W (-122.786)

Altitude - Radius:

Alt: 700 ft - Rad: 555.6 m (0.3 nm)

Airspace:

UNCONTROLLED

FIR - Contact:

CZVR - 604-586-4500

Weather:

2.6 Celsius - Snow, Rain, Partially cloudy

Please ensure you received all required authorizations prior to flight.

Disclaimer

This Site Survey was created using RPAS Wilco by AIM Robotics. The flight plan contained is intended only for RPAS flights on the date/time and location specified. The user accepts all responsibility for the accuracy and completeness of the information contained.

For the complete Terms & Conditions, see

<https://rpaswilco.com/#/tnc>

Included

Site Survey

Obstacles (if available)

Nearby Aerodromes

Canadian Aviation Regulations

GFA

Aerodrome Supplements

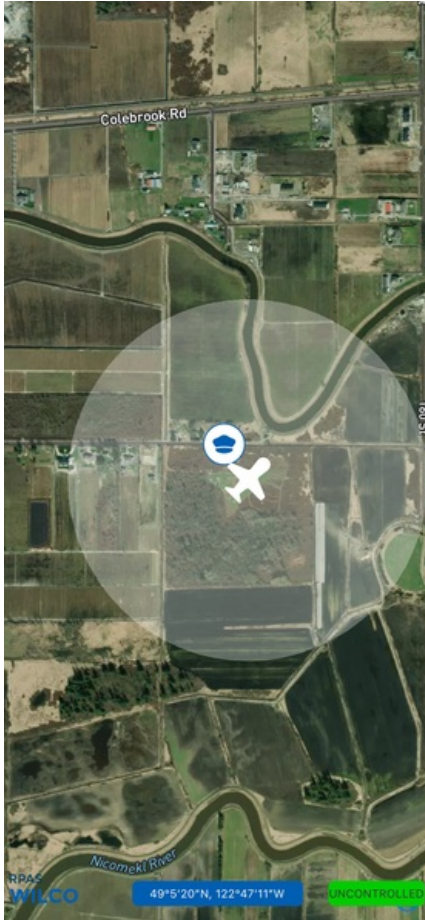
METAR & TAF (if available)

NOTAMs



CFS



Flight Map

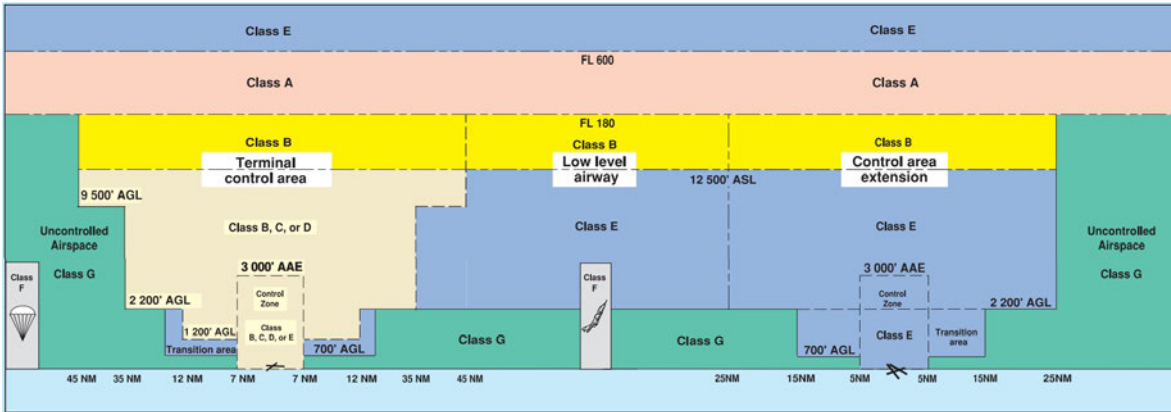


MAP Details

	Latitude	Longitude
 MODEL	49° 5' 19.60" N (49.089)	122° 47' 11.20" W (-122.786)
 Pilot	49° 5' 23.20" N (49.0898)	122° 47' 14.80" W (-122.7874)



Airspace Classification



Overlying Airspaces

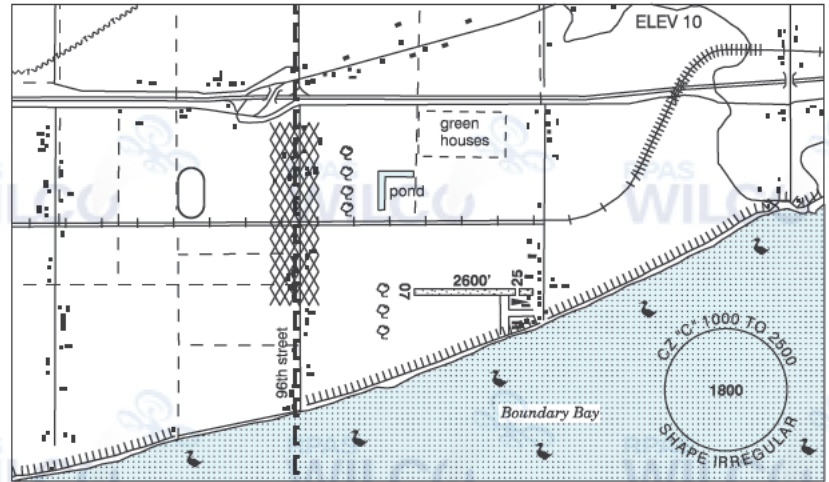
Class	Name	Floor	Ceiling
C	Vancouver, BC TCA	2500MSL	4500MSL
C	Vancouver, BC TCA	4500MSL	6500MSL
C	Vancouver, BC TCA	6500MSL	8500MSL
C	Vancouver, BC TCA	8500MSL	9500MSL
C	Vancouver, BC TCA	9500MSL	12500MSL
B	Vancouver, BC TCA	12500MSL	18000MSL
E	T611 Airway	2200AGL	12500MSL
B	T611 Airway	12500MSL	18000MSL
E	T629 Airway	2200AGL	12500MSL
B	T629 Airway	12500MSL	18000MSL
E	Pitt Meadows, BC CAE	1500MSL	12500MSL
B	Pitt Meadows, BC CAE	12500MSL	18000MSL
E	V11 Airway	2200AGL	12500MSL
B	V11 Airway	12500MSL	18000MSL
E	T775 Airway	2200AGL	12500MSL
B	T775 Airway	12500MSL	18000MSL
E	B22 Airway	2200AGL	12500MSL
B	B22 Airway	12500MSL	18000MSL
E	V300 Airway	2200AGL	12500MSL
B	V300 Airway	12500MSL	18000MSL
E	V342 Airway	2200AGL	12500MSL
B	V342 Airway	12500MSL	18000MSL

Nearest Aerodromes & Distance from Operation

DELTA HERITAGE AIR PARK (CAK3 AERODROME Reg)	Lat: 49.079 Long: 122.938	11.091 KM 5.99 NM
LANGLEY REGIONAL (CYNJ AERODROME/HELIPORT Cert)	Lat: 49.101 Long: 122.631	11.399 KM 6.15 NM
SURREY MEMORIAL HOSPITAL (CVS3 HELIPORT Cert)	Lat: 49.176 Long: 122.844	10.564 KM 5.7 NM
PITT MEADOWS (CAJ8 WATERDROME Reg)	Lat: 49.209 Long: 122.709	14.506 KM 7.83 NM

DELTA / DELTA HERITAGE AIR PARK BC

CAK3



REF	N49 04 43 W122 56 17 4.5E 17°E (2013) UTC-8(7) Elev 10' VTA A5004
OPR	Recreational Aircraft Association, Chap 85 (DapCom) 604-543-8894, Caretaker 604-722-3791 Reg PPR by phone 604-878-9050
PF	B-1 C-2,3,6 D-4,5
FLT PLN	
FIC	Kamloops 866-WXBRIEF (Toll free within Canada) or 866-541-4101 (Toll free within Canada & USA)
SERVICES	
FUEL	100LL
S	4,5
RWY DATA	Rwy 07/25 2600x75 TURF Thld 25 displ 300'
RCR	Opr No win maint. Rwy soft when wet
COMM	
ATIS	Boundary Bay 125.5 15-07Z±
ATF	tfc 123.3 2NM below 1000 ASL Excluding that portion which penetrates Boundary Bay class "C" airspace.

BRITISH COLUMBIA

AERODROME / FACILITY DIRECTORY

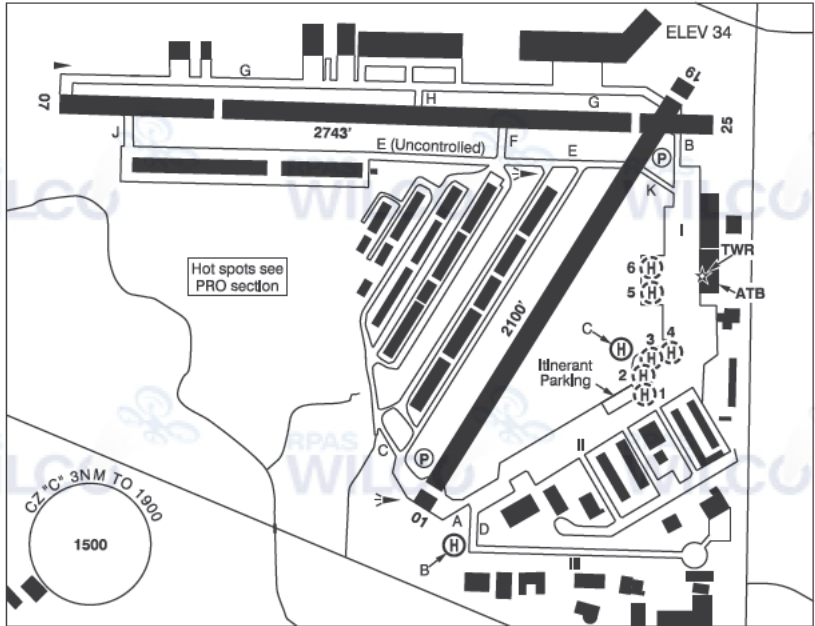
DELTA / DELTA HERITAGE AIR PARK BC (Cont'd)

CAK3

PRO	<p>HELI NOISE</p> <p>Heli tng not auth.</p> <p>Circuit alt 600 ASL. Rgt hand circuits Rwy 25 (CAR 602.96).</p> <p>NOISE ABATEMENT PROCEDURES:</p> <p><u>Departures:</u></p> <p>Rwy 25 Dep: When safe hdg 280°, then further right turn to crosswind to avoid noise sensitive area.</p> <p>Downwind dep auth fr Rwy 25 at 600 ASL. No southbound dep until clear of circuit to E. Avoid flt over dike and adj water area below 600 ASL.</p> <p><u>Arrivals:</u></p> <p>All arr to air park fr seaside. Cross midfield at 600 ASL and join downwind (CAR 602.96).</p> <p>Rwy 07 Arr: Fr downwind, turn on base leg well bfr 96th Street to avoid noise-sensitive area. When S of railway tracks hdg 100° to intercept final apch E of row of trees.</p> <p>Boundary Bay A/D 2.5NM W, obtain clnc prior to entering Boundary Bay CZ. Refer to VTPC. Procedures for crossing the Southern Strait of Georgia within Tml Class C airspace refer to Vancouver Intl VTPC FOR CROSSING THE SOUTHERN STRAIT OF GEORGIA ABOVE 2500FT.</p>
CAUTION	<p>Extremely confined circuit. Trees 750' fr thld Rwy 07, trees and obst adj to thld Rwy 25. Acft unable to accommodate noise abatement procedures and obst avoidance should avoid the air park. Beware of Boundary Bay A/D tfc close to Delta Heritage Air Park.</p>

LANGLEY REGIONAL BC

CYNJ



REF	N49 06 03 W122 37 51 Adj 17°E (2013) UTC-8(7) Elev 34' VTA A5004 LO2 T1 CAP
OPR	Township of Langley 604-534-7330 APM 1500-0130Z± Cert
PF	B-1,2,3 C-4,5,6
CUST	AOE/CAN
FLT PLN	
FIC	Kamloops 866-WXBRIEF (Toll free within Canada) or 866-541-4101 (Toll free within Canada & USA)
ACC	Vancouver IFR 604-586-4590/4591; IFR tng flts PPR ctc 604-586-4592; ctc Victoria Tml 604-586-4561 for IFR clnc when TWR clsd.
DUAT	APM'S office
WX	LAWO 1630-0230Z (DT 1530-0330Z)
SERVICES	
FUEL	100LL (self-serve), JA-1 (1530-0100Z± by truck, 604-360-2306)
OIL	All
S	1,2,3,4,5
RWY DATA	Rwy 07(075°)/25(255°) 2743x75 ASPH Thld 07 displ 654'. Thld 25 displ 343'. Avbl dur twr oprg hrs only. Ngt ops not auth. Rwy 01(015°)/19(195°) 2100x75 ASPH Thld 01 displ 104'. Thld 19 displ 96'. Rwy 01 preferred rwy when twr clsd. Rwy 01 designated calm wind rwy.
RWY CERT	Rwy 01/19 AGN I Rwy 07/25 AGN I
TWY	Twy E uncontrolled west of Twy F.
APRON	Apron I & II wing tip clearance less than 50' wide in some areas
RCR	Twr 604-514-9324 Ltd win maint Aprt rstd to a max wt of 12,500 lbs exc with opr au h PLR

BRITISH COLUMBIA

AERODROME/FACILITY DIRECTORY

LANGLEY REGIONAL BC (Cont'd)

CYNJ

HELI DATA	<p>B - FATO 110' dia ASPH TLOF 28' dia ASPH Safety Area 143' dia Max heli length 58' (exc with opr appr) 20,500 lbs. Medevac flt only 06-15Z±. C - FATO/TLOF 85' dia ASPH Safety Area 110' dia Max heli overall length 59' (exc with ops appr). 20,500lbs. Day only. Parking Pad 1: 31' dia CONC 3600 lbs For temporary prkg and refueling only (100LL only). Parking Pads 2-4: 31' dia CONC 3600 lbs Private. Parking Pads 5 & 6: 66' dia ASPH 14,000lbs Max heli overall length 55'</p>
LIGHTING	<p>01-(TE ME) P1 4.5°, 19-(TE ME) AP 4.0° Lgts on automatic timer single setting after twr hrs to 07Z±. FATO-B: RW no aiming pt (LO) ARCAL-119.0 type J (FATO-B use ONLY, No ARCAL on rwy)</p>
COMM	<p>ATIS 124.5 1-877-517-2847 1630-0230Z (DT 1530-0330Z) GND 121.9 1630-0230Z (DT 1530-0330Z) TWR 119.0 (V) 1630-0230Z (DT 1530-0330Z) (emerg only 604-534-9443) MF tfc 119.0 0230-1630Z (DT 0330-1530Z) 3NM 1900 ASL (CAR 602.98)</p>
NAV	<p>VOR PITT MEADOWS YPK 112.4 N49 12 57 W122 42 54 (44')</p>
PRO	<p>No circuits on any rwy from 2130-0800 local time.</p> <p>Pilots should refer to Canadian Airport Charts (CAC) to obtain details on established hot spots, prior to operating on maneuvering areas. CAC are available for free on the NAV CANADA website.</p> <p>ALL DEPARTURES: Ctc 121.9 after run-up or prior to entering twy with TYPE / IDENT / POSITION / INTENTIONS / RUN UP COMPLETE</p> <p>RWY 19 DEPARTURES: Best rate of climb. Climb rwy hdg til S of Fraser Hwy. Turn left track aprx 160° to follow green belt. Make crosswind turn S of 44th Ave over Langley Golf Centre. Make turn to downwind E of 224th St towards Tall Timbers Golf Course. Follow VTPC FIXED WING CIRCUITS RWY 19. Avoid flt over built up areas on crosswind and downwind legs. Circuit altitude 1000 ASL.</p> <p>RWY 25 DEPARTURES: Rgt hand circuits (CAR 602.96). Best rate of climb. Rwy 07/25 shall not be used when twr is clsd.</p> <p>VFR ARR/DEP ROUTES: See FIXED WING ARR/DEP VTPC</p> <p>ATS REQUIREMENTS: All VFR acft arriving, departing or transiting the Vancouver or Victoria Tower Class C or D airspace require a transponder code. - All acft departing Vancouver or Victoria Intl (including Water Aerodrome) call Kamloops FIC at 866-541-4101 or PAC RDO 122.5 or 123.15 for code assignment at least 30 min prior to flight or file a VFR Flight Plan/Flight Iinerary. - All acft arriving Vancouver, Victoria Intl (including Water Aerodrome) or transiting Vancouver or Victoria Control Zones obtain a code from one of the following ATS units: Vancouver Harbour, Nanaimo, Victoria Harbour, Boundary Bay, Langley, Abbotsford or Pitt Meadows or call Kamloops FIC at 866-541-4101 or PAC RDO 122.5 or 123.15. - All acft arriving Victoria Intl from a non NAV CANADA site call Kamloops FIC at 866-541-4101 or PAC RDO 122 5 or 123.15 for code assignment at least 30 minutes prior to flight or file a VFR Flight Plan/ Flight Itinerary.</p>

BRITISH COLUMBIA

AERODROME / FACILITY DIRECTORY

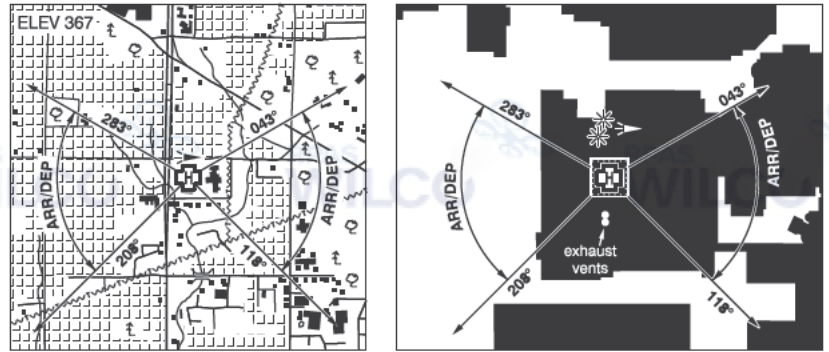
LANGLEY REGIONAL BC (Cont'd)

CYNJ

HELI	<p>Day: East route dep expedite climb to 600 ASL prior to 232nd street. East of 232nd street commence climb to 1000 ASL. East route arr maintain 1000 ASL descend to 600 ASL prior to 232nd street. South East route dep expedite climb to 1000 ASL prior to 216th street. South East route arr maintain 1000 ASL to 216th street. North route dep expedite climb to 600 ASL prior to Milner. North of Milner commence climb to 1000 ASL. North route arr maintain 1000 ASL descend to 600 ASL prior to Milner.</p> <p>Night: North route arr/dep overfly Rwy 01 min alt 1000 at Milner.</p> <p>West route arr/dep overfly Fraser hwy min alt 1000 ASL at bypass. Medium to hvy heli are only permitted to gnd taxi on Apron III. Hover taxiing on Apron III proh unless coordinated with APM.</p> <p>All Heli must ctc GND 121.9 for transponder code and routing info.</p>
CAUTION	<p>Trees to 100 AGL 250' SE pad B, 250' W Thld 07, and S of Fraser hwy. Only pilots familiar with airport should use airport dur hrs of darkness. Use caution when taxiing on Apron I & II due to min wing-tip clearance and frequent heli ops. Frequent heli arr/dep on Aprons I & II. ATC ctc not rqrd for vehicle and fixed-wing movement on aprons. Heli aiming point at eastern end of Apron III. Ocsl wildlife.</p>

VANCOUVER (SURREY MEMORIAL HOSP) BC (Heli)

CVS3



REF	N49 10 33 W122 50 38 Adj 17°E (2014) UTC-8(7) Elev 367' VTA A5004
OPR	Fraser Health Authority 604-677-3672 Cert PPR
PF	B-1,2,3,4 C-5,6
FLT PLN	
FIC	Kamloops 866-WXBRIEF (Toll free within Canada) or 866-541-4101 (Toll free within Canada & USA)
HELI DATA	FATO 86' x 86' non-supporting TLOF 57' x 57' CONC Safety Area 115' x 115' Max heli overall length 57.4' Elevated rooftop 14,690 lbs
RCR	Opr
LIGHTING	RY(LO) green PN
COMM	
ATF	tfc 123.2 1.5NM 1500 ASL
A/G	Hosp Security 158.76 FM 3 min PN
PRO	Arr/dep 043° to 118° & 208° to 283° fr heli (H1), day/night use. (CAR 602.96)
CAUTION	High velocity hosp exhaust vents adj, S heli. Elevator penthouse adj, N heli. LED obst lgt not vis through NVG.

CANADA WATER AERODROME SUPPLEMENT

Effective 0901Z 24 March 2022 to 0901Z 20 April 2023

AERODROME/FACILITY DIRECTORY B161

PICKLE LAKE ON (Cont'd)

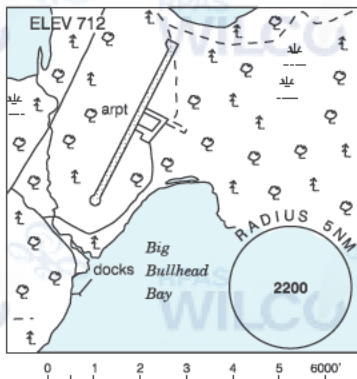
CKG4

PRO	Acraft not to overfly townsites below 1000 AGL. Ldg or tkof not authorized within area depicted in sketch.
CAUTION	Lgt twr 1528 ASL 1.4NM ENE. Unlgt twr 1357 ASL 0.6NM ENE. Land A/D 1.3NM S.

PINE DOCK MB

CKT8

REF	N51 36 39 W96 49 02 1S 3°E (2014) UTC-6(5) Elev 712' A5007
OPR	Kitchi Airways 204-276-2463 Reg PPR
PF	B-1 C-2,4,5
FLT PLN	Pilots to open/close VFR flt plan with Edmonton rdo, FISE or by phone. Edmonton 866-WXBRIEF (Toll free within Canada) or 866-541-4102 (Toll free within Canada & USA)
SERVICES	
FUEL	100LL, JA
S	4
PVT ADV	Kitchi Airways 124.8
A/D DATA	Open water mid May-mid Nov
COMM	
ATF	ttc 122.8 5NM 3800 ASL

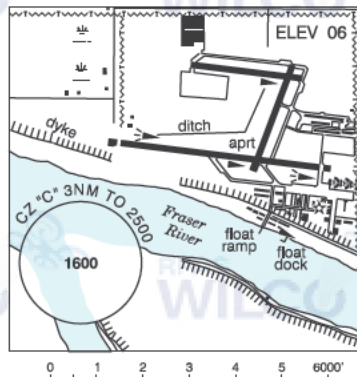


PISTOL LAKE ON — See MINAKI / PISTOL LAKE

PITT MEADOWS BC

CAJ8

REF	N49 12 34 W122 42 34 1SW 17°E (2013) UTC-8(7) Elev 06' VTA A5004
OPR	Pitt Meadows Arpt Society 604-465-8977 15-01Z† Mon-Fri Reg
PF	A-1,2,3,7 at adj land A/D C-4,5,6
FLT PLN	
FIC	Kamloops 866-WXBRIEF (Toll free within Canada) or 866-541-4101 (Toll free within Canada & USA)
WX	LAWO 15-07Z†
SERVICES	
FUEL	100LL, JA-1 at adj land A/D
OIL	All
S	1,2,3,4,5 at adj land A/D
A/D DATA	Tidal range 4', current 3-8 kt.



COMM	
ATIS	125.0 1-877-517-2847 15-07Z†
GND	123.8 15-07Z†
TWR	Pitt 126.3 (V) 15-07Z†
MF	ttc 126.3 07-15Z† 3NM 2500 ASL (CAR 602.98)

CANADA WATER AERODROME SUPPLEMENT

Effective 0901Z 24 March 2022 to 0901Z 20 April 2023

B162 AERODROME/FACILITY DIRECTORY

PITT MEADOWS BC (Cont'd)

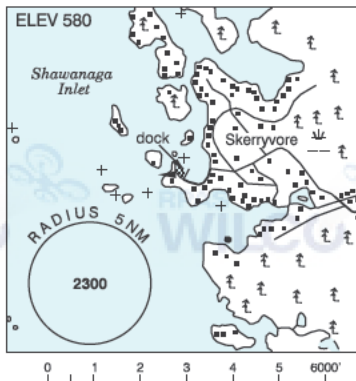
CAJ8

NAV	VOR YPK 112.4 N49 12 57 W122 42 54
PRO	Circuit altitude for seaplanes 500 ASL, all circuits on S side of Fraser River. Arr/dep avoid low flt over built-up areas, or as directed by ATC. Eastbound dep on Fraser River initiate tkof W of float ramp, or as directed by ATC.
CAUTION	Drifting logs. Lower end of seaplane launching ramp is less than 1' below zero tide level; caution at low tides.

POINTE AU BARIL STATION ON

CPB6

REF	N45 32 24 W80 23 15 4SW 11°W UTC-5(4) Elev 580' A5000
OPR	Jeremy and Ryan Edwards 647-202-9995 or 416-400-5244 Reg
PF	B-5
FLT PLN	FIC London 866-WXBRIEF (Toll free w/ in Canada) or 866-541-4104 (Toll free within Canada & USA)
A/D DATA	Open water May-mid Nov, sandy bottom. Dock depth 5'.
COMM	ATF tfc 123.2 5NM 3600 ASL
CAUTION	Rock shoal 82' NE of boathouse marked with white buoy. Enter bay from N. Remain E of island.



POINTS NORTH LANDING SK

CKC2

REF	N58 16 04 W104 04 48 Adj S 9°E (2014) UTC-6 Elev 1550' aprx A5024
OPR	Points North Freight Forwarding Inc 306-633-2137 Reg
PF	B-1,2,5 PN Opr
FLT PLN	FIC Edmonton 866-WXBRIEF (Toll free within Canada) or 866-541-4102 (Toll free within Canada & USA)
SERVICES	FUEL 100LL, JA-1 (FSII avbl) OIL All S 1,2,4,6
A/D DATA	Open water Jun-mid Oct. Sand bottom, ramp.
COMM	ATF 68 Points North UNICOM ltd hrs O/T tfc 123.3 5NM centred on Points North Landing land A/D adj 4700 ASL
CAUTION	Extv tfc adj land aprt. VHF rdo twr 85 AGL on apron. Lgtd twr 1991 ASL (370 AGL) 3NM SW of A/D.

